

NK02 Series thiNKswitch™

Intelligent Nano-Kinetic Pushbutton



- 11mm depth
- 21.5mm outer diameter
- 19mm mounting diameter
- 2.5A, 24V
- Stainless steel or chromed brass housing
- IP69K protection to front panel
- Rear sealed

Specification

Termination	15cm flying leads
Switching Function	Momentary or maintained (toggle) (factory programmed)
Maximum Load	2.5A, 24V
Operating Voltage	8VDC to 24VDC
“On” Resistance	100mΩ
Operating Temperature	-40°C to +85°C
Ingress Protection	IP69K, rear sealed
Duty Cycle	1,000,000 (min)
Body Material	Chrome plated brass or stainless steel
Potting Material	PUR

The NK02 series switches belong to thiNKswitch™ range of non-moving switches based on intelligent nano-kinetic technology made and designed in Germany. Standard versions are made of turned stainless steel or highly polished chromed brass. They are fully environmentally protected making them suitable for situations where absolute robustness and long life are a requirement. The advantages of these microprocessor controlled switches is that they can be custom programmed to meet specific customer needs with a wide range of possibilities for controlling equipment.

Custom variations to sensitivity, housing materials and designs are also possible. Typical applications are vending machines, cash tellers, park houses, public buildings and sanitary installations.

C+R Automations- GmbH

Nürnberger Straße 45
90513 Zirndorf

Tel. +49 (0)911 656587-0
Fax +49 (0)911 656587-99

E-Mail: info@crautomation.de
www.cractionation.com

Änderungen vorbehalten

NK02 thiNKswitch™

19mm

Ø 21.5mm

↑ 10mm

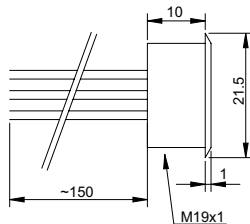
IP69K



Specification

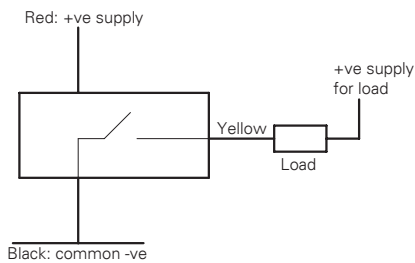
Termination	15cm flying leads
Switching function	Momentary or toggle
Configuration of poles	Single
Maximum load	2.5A, 8VDC to 24VDC
"On" resistance	100 mΩ
Insulation resistance	> 10 ⁹ MΩ
Operating temperature	-40°C to +85°C
Ingress protection	IP66, IP68 (EN 60529); IP69K (DIN 4050)
Duty cycle	1,000,000 (min)
Impulse time	0.5 sec. (Momentary)
Operating force	<3N
Nut mounting torque	2.5Nm
Panel thickness	0.5mm to 4.0mm
Body & button material	See ordering information
Contact material	Silver plated brass

Product Dimensions



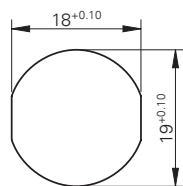
All dimensions in mm

Circuit Diagram



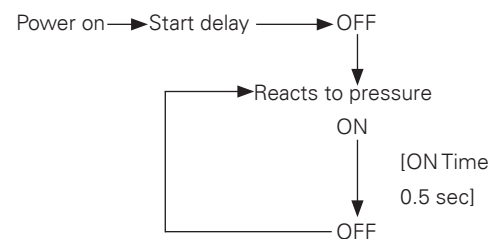
Open Collector (OC)

Mounting Dimensions



Timing Diagram

Momentary



Ordering information

NK02/xx/F/x/S/L1

Material /xx/

V2: Stainless steel¹
BC: Brass chrome

Switch Function /x/

M: Momentary
T: Toggle

C+R Automations- GmbH

Nürnberg Straße 45
90513 Zirndorf

Tel. +49 (0)911 656587-0
Fax +49 (0)911 656587-99

E-Mail: info@crautomation.de
www.crautomation.com

Änderungen vorbehalten